

AR 精密直角
减速器系列

AR Precision Right
Angle Reducer Series



产品优势

- 采用先进六轴精密机械加工,一次装夹同时加工完成确保最佳几何精度。
- 传动齿轮经精密研制,运转低背隙、高精度。
- 精密传动、寂静、稳定、顺畅、流程;连到精密传动,低噪音、高刚性等高品质要求。
- 本体结构扎实、体积小,有效节省安装空间。
- 虽然体积小、重量轻。但具有高扭矩输出及低背隙的优异特性。
- 订购时请告知马达法兰及心轴尺寸。

- Adopting advanced six axis precision machining, the machining is completed simultaneously with one clamping to ensure optimal geometric accuracy.
- The transmission gear has been precisely developed to operate with low backlash and high precision.
- Precision transmission, silence, stability, smoothness, and process; Connected to precision transmission, high quality requirements such as low noise and high rigidity.
- The body structure is solid and the volume is small, effectively saving installation space.
- Although small in size and lightweight. But it has excellent characteristics of high torque output and low backlash.
- Please inform the size of the motor flange and spindle when placing an order.

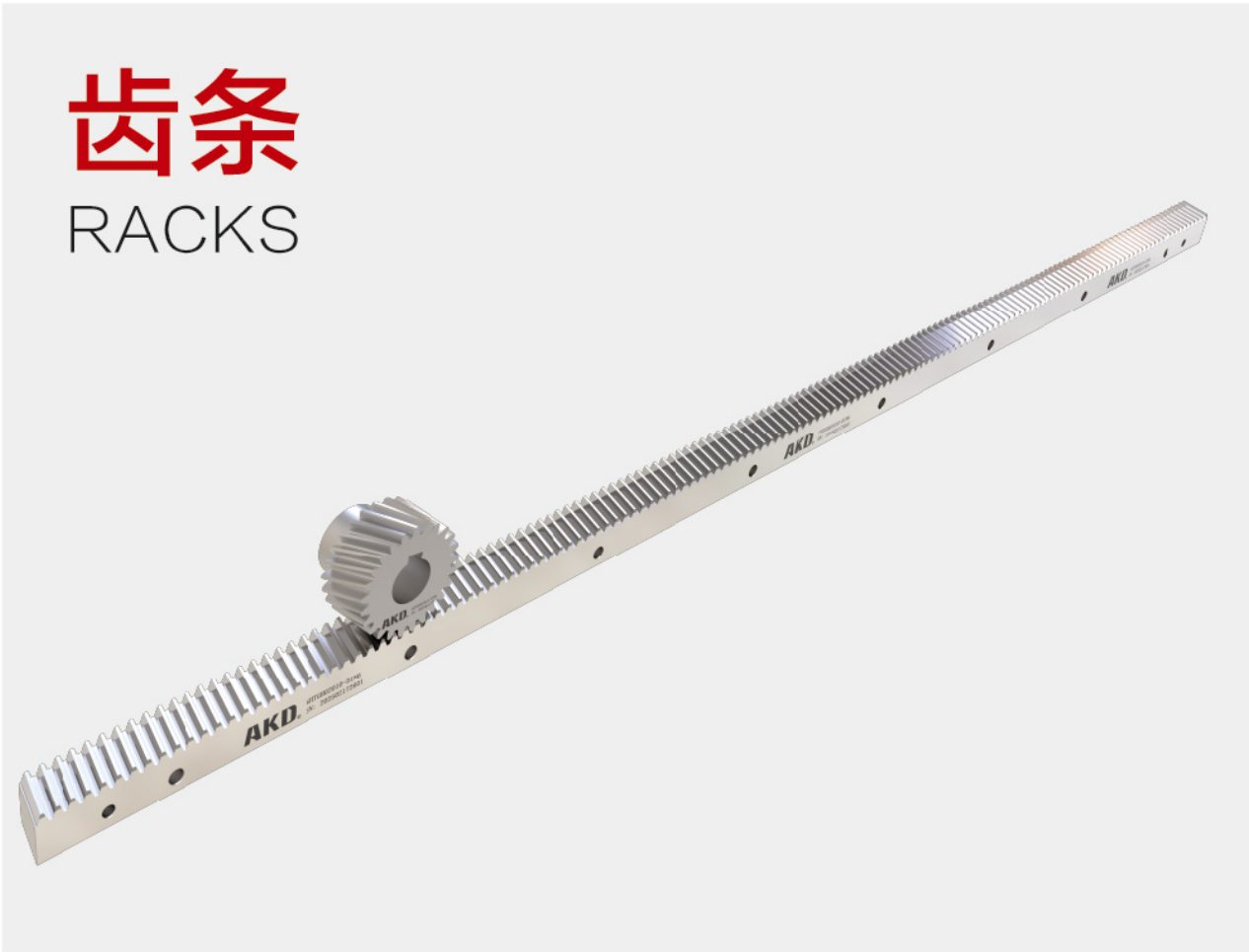
规格表

说明 Description 型号 Model No.	减速比 Ratio	容许最大转矩 Allowable Max Torque (kgf.m/N.m)	破坏力矩值 Breaking Torque (kgf.m/N.m)	容许马达转速 Allowable Max Speed (rpm/min)	背隙 Backlash (min-arc)	重量 Weight (kg)
AR042	3	1.5/15	4/40	2500	0.5	0.5
AR042S	9.12.15.21.30	1.5/15	4/40	2500	2	0.9

说明 Description 型号 Model No.	减速比 Ratio	容许最大转矩 Allowable Max Torque (kgf.m/N.m)	破坏力矩值 Breaking Torque (kgf.m/N.m)	容许马达转速 Allowable Max Speed (rpm/min)	背隙 Backlash (min-arc)	重量 Weight (kg)
AR060	2.3.5	4.5/45	12/120	2500	0.5	1.2
AR060S	6.8.10.14.20	4.5/45	12/120	2500	2	2

说明 Description 型号 Model No.	减速比 Ratio	容许最大转矩 Allowable Max Torque (kgf.m/N.m)	破坏力矩值 Breaking Torque (kgf.m/N.m)	容许马达转速 Allowable Max Speed (rpm/min)	背隙 Backlash (min-arc)	重量 Weight (kg)
AR090	2.3.5	12/120	32/320	2500	0.5	3.6
AR090S	6.8.10.14.20	12/120	32/320	2500	2	6.5

说明 Description 型号 Model No.	减速比 Ratio	容许最大转矩 Allowable Max Torque (kgf.m/N.m)	破坏力矩值 Breaking Torque (kgf.m/N.m)	容许马达转速 Allowable Max Speed (rpm/min)	背隙 Backlash (min-arc)	重量 Weight (kg)
AR120	2.3.5	16/160	45/450	2500	0.5	8
AR120S	6.8.10.14.20	16/160	45/450	2500	2	15.5



齿条订购代码
Rack ordering code

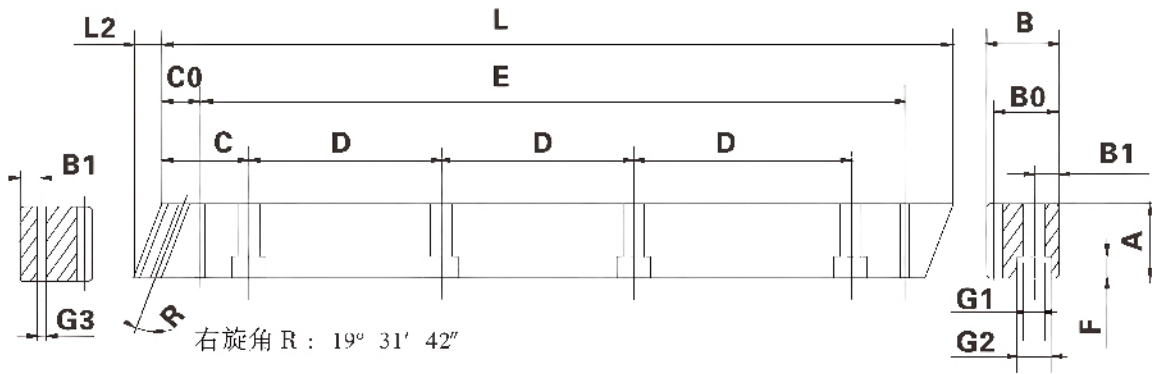
模数	材料	热处理方式	齿的角度方向	齿条长度	齿条精度等级	表面处理方式
02	C	H	R	10	06	**
M1.5~M12	C S45C M 42CrMo	H 齿面高周波 Q 调质	I 直齿 R 右旋 L 左旋	10 1000mm 05 500mm	06 DIN6 07 DIN7	P 喷砂 F 发黑 空白 无

CHR 斜齿齿条

CHR Helical rack

- 精度等级 DIN6/碳钢
 - 齿厚公差: -22~0μm
 - 右旋斜齿齿条
 - 齿面高周波50~55HRC并研磨
 - 四面研磨
- Accuracy grade DIN6/carbon steel
 - Tooth thickness tolerance: -22~0μm
 - Right-handed helical gear rack
 - High frequency 50~55HRC and grinding on the tooth surface
 - Four sided grinding

右旋*研磨*DIN6



单位: mm

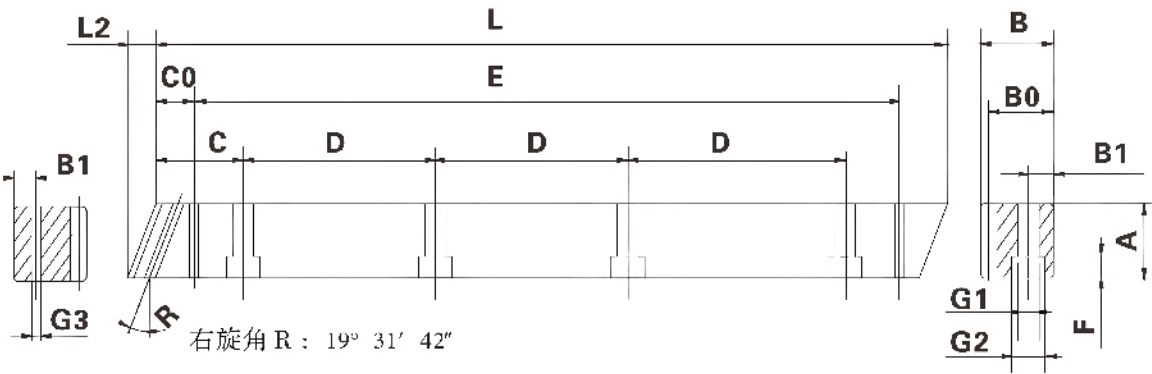
产品型号	L	L2	齿数	A	B	B0	C	D	孔数	B1	G1	G2	F	C0	E	G3
1.5CHR0506	500	6	100	17	17	15.5	62.5	125	4	8	6	9.5	7	31.7	436.6	5.7
1.5CHR1006	1000	6	200	17	17	15.5	62.5	125	8	8	6	9.5	7	31.7	936.6	5.7
02CHR0506	500	8.5	75	24	24	22	62.5	125	4	8	7	11	7	31.7	436.6	5.7
02CHR1006	1000	8.5	150	24	24	22	62.5	125	8	8	7	11	7	31.7	936.6	5.7
03CHR0506	500	10.3	50	29	29	26	62.5	125	4	9	10	15	9	35	430	7.7
03CHR1006	1000	10.3	100	29	29	26	62.5	125	8	9	10	15	9	35	930	7.7
4CHR0506	506.7	13.8	38	39	39	35	62.5	125	4	12	10	15	9	33.3	433	7.7
4CHR1006	1000	13.8	75	39	39	35	62.5	125	8	12	10	15	9	33.3	933.4	7.7
05CHR0506	500	17.4	30	49	39	34	62.5	125	4	12	14	20	13	37.5	425	11.7
05CHR1006	1000	17.4	60	49	39	34	62.5	125	8	12	14	20	13	37.5	925	11.7
06CHR0506	500	20.9	25	59	49	43	62.5	125	4	16	18	26	17	37.5	425	15.7
06CHR1006	1000	20.9	50	59	49	43	62.5	125	8	16	18	26	17	37.5	925	15.7
08CHR0506	480	28	18	79	79	71	60	120	4	25	22	33	21	120	240	19.7
08CHR1006	960	28	36	79	79	71	60	120	8	25	22	33	21	120	720	19.7
10CHR1006	1000	35.1	30	99	99	89	62.5	125	8	32	33	48	32	125	750	19.7

CHR 斜齿齿条

CHR Helical racks

- 精度等级 DIN10/碳钢
 - 齿厚公差: -95~0μm
 - 右旋斜齿齿条
 - 齿面高周波50~55HRC并研磨
- Accuracy grade DIN10/carbon steel
 - Tooth thickness tolerance: -95~0μm
 - Right-handed helical gear rack
 - High frequency 50~55HRC and grinding on the tooth surface

右旋*铣齿*DIN10



单位: mm

产品型号	L	L2	齿数	A	B	B0	C	D	孔数	B1	G1	G2	F	C0	E	G3
1.5CHR0510	500	6	100	17	17	15.5	62.5	125	4	8	6	9.5	7	31.7	436.6	5.7
1.5CHR1010	1000	6	200	17	17	15.5	62.5	125	8	8	6	9.5	7	31.7	936.6	5.7
02CHR0510	500	8.5	75	24	24	22	62.5	125	4	8	7	11	7	31.7	436.6	5.7
02CHR1010	1000	8.5	150	24	24	22	62.5	125	8	8	7	11	7	31.7	936.6	5.7
03CHR0510	500	10.3	50	29	29	26	62.5	125	4	9	10	15	9	35	430	7.7
03CHR1010	1000	10.3	100	29	29	26	62.5	125	8	9	10	15	9	35	930	7.7
04CHR0510	506.7	13.8	38	39	39	35	62.5	125	4	12	10	15	9	33.3	433	7.7
04CHR1010	1000	13.8	75	39	39	35	62.5	125	8	12	10	15	9	33.3	933.4	7.7
05CHR0510	500	17.4	30	49	39	34	62.5	125	4	12	14	20	13	37.5	425	11.7
05CHR1010	1000	17.4	60	49	39	34	62.5	125	8	12	14	20	13	37.5	925	11.7
06CHR0510	500	20.9	25	59	49	43	62.5	125	4	16	18	26	17	37.5	425	15.7
06CHR1010	1000	20.9	50	59	49	43	62.5	125	8	16	18	26	17	37.5	925	15.7
08CHR0510	480	28	18	79	79	71	60	120	4	25	22	33	21	120	240	19.7
08CHR1010	960	28	36	79	79	71	60	120	8	25	22	33	21	120	720	19.7
10CHR1010	1000	35.1	30	99	99	89	62.5	125	8	32	33	48	32	125	750	19.7

CHI 直齿齿条

CHI SPUR racks

- 精度等级 DIN6/碳钢

■ 齿厚公差:-22~0μm

■ 直齿齿条

■ 齿面高周波50~55HRC并研磨

■ 四面研磨
- Accuracy grade DIN6/carbon steel

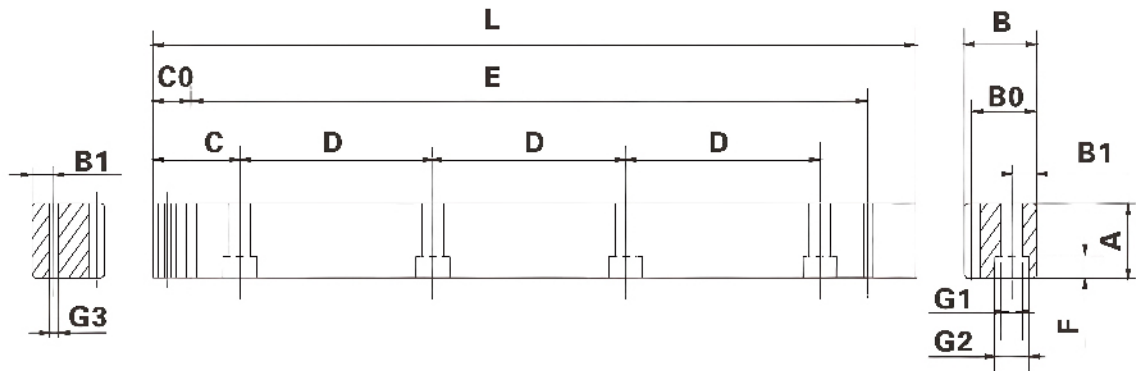
■ Tooth thickness tolerance: -22~0μm

■ Straight toothed rack and pinion

■ High frequency 50~55HRC and grinding on the tooth surface

■ Four sided grinding

直齿*研磨*DIN6



单位: mm

产品型号	L	齿数	A	B	B0	C	D	孔数	B1	G1	G2	F	C0	E	G3
1.5CHI0506	499.51	106	17	17	15.5	62.44	124.88	4	8	6	9.5	7	29.0	441.5	5.7
1.5CHI1006	999.03	212	17	17	15.5	62.44	124.88	8	8	6	9.5	7	29.0	941.0	5.7
02CHI0506	502.64	80	24	24	22	62.83	125.66	4	8	7	11	7	31.3	440.1	5.7
02CHI1006	1005.28	160	24	24	22	62.83	125.66	8	8	7	11	7	31.3	942.7	5.7
03CHI0506	508.95	54	29	29	26	63.62	127.23	4	9	10	15	9	34.4	440.1	7.7
03CHI1006	1017.9	108	29	29	26	63.62	127.23	8	9	10	15	9	34.4	949.1	7.7
04CHI0506	502.64	40	39	39	35	62.83	125.66	4	12	10	15	9	37.5	427.7	7.7
04CHI1006	1005.28	80	39	39	35	62.83	125.66	8	12	10	15	9	37.5	930.3	7.7
05CHI0506	502.65	32	49	39	34	62.83	125.66	4	12	14	20	13	30.1	442.4	11.7
05CHI1006	1005.31	64	49	39	34	62.83	125.66	8	12	14	20	13	30.1	945	11.7
06CHI0506	508.95	27	59	49	43	63.62	127.23	4	16	18	26	17	31.4	446.1	15.7
06CHI1006	1017.9	54	59	49	43	63.62	127.23	8	16	18	26	17	31.4	955	15.7
08CHI0506	502.64	20	79	79	71	62.83	125.66	4	25	22	33	21	26.6	449.5	19.7
08CHI1006	1005.28	40	79	79	71	62.83	125.66	8	25	22	33	21	26.6	952	19.7
10CHI1006	1005.28	32	99	99	89	62.83	125.66	8	32	33	48	32	125.6	754	19.7

CHI 直齿齿条

CHI SPUR racks

- 精度等级 DIN10/碳钢

■ 齿厚公差:-95~0μm

■ 直齿齿条

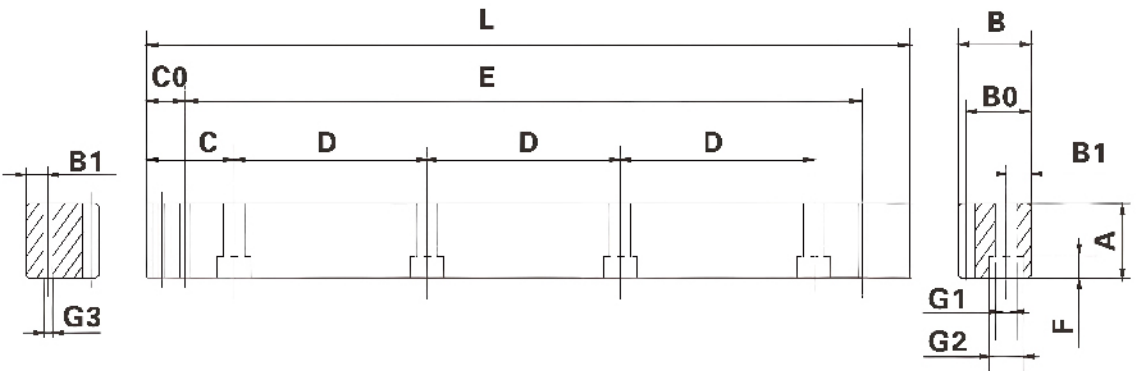
■ 齿面高周波50~55HRC并研磨
- Accuracy grade DIN10/carbon steel

■ Tooth thickness tolerance: -95~0μm

■ Straight toothed rack and pinion

■ High frequency 50~55HRC and grinding on the tooth surface

直齿*铣齿*DIN10



单位: mm

产品型号	L	齿数	A	B	B0	C	D	孔数	B1	G1	G2	F	C0	E	G3
1.5CHI0510	499.51	106	17	17	15.5	62.44	124.88	4	8	6	9.5	7	29.0	441.5	5.7
1.5CHI1010	999.03	212	17	17	15.5	62.44	124.88	8	8	6	9.5	7	29.0	941.0	5.7
02CHI0510	502.64	80	24	24	22	62.83	125.66	4	8	7	11	7	31.3	440.1	5.7
02CHI1010	1005.28	160	24	24	22	62.83	125.66	8	8	7	11	7	31.3	942.7	5.7
03CHI0510	508.95	54	29	29	26	63.62	127.23	4	9	10	15	9	34.4	440.1	7.7
03CHI1010	1017.9	108	29	29	26	63.62	127.23	8	9	10	15	9	34.4	949.1	7.7
04CHI0510	502.64	40	39	39	35	62.83	125.66	4	12	10	15	9	37.5	427.7	7.7
04CHI1010	1005.28	80	39	39	35	62.83	125.66	8	12	10	15	9	37.5	930.3	7.7
05CHI0510	502.65	32	49	39	34	62.83	125.66	4	12	14	20	13	30.1	442.4	11.7
05CHI1010	1005.31	64	49	39	34	62.83	125.66	8	12	14	20	13	30.1	945	11.7
06CHI0510	508.95	27	59	49	43	63.62	127.23	4	16	18	26	17	31.4	446.1	15.7
06CHI1010	1017.9	54	59	49	43	63.62	127.23	8	16	18	26	17	31.4	955	15.7
08CHI0510	502.64	20	79	79	71	62.83	125.66	4	25	22	33	21	26.6	449.5	19.7
08CHI1010	1005.28	40	79	79	71	62.83	125.66	8	25	22	33	21	26.6	952	19.7
10CHI1010	1005.28	32	99	99	89	62.83	125.66	8	32	33	48	32	125.6	754	19.7